

Glass Mosaics Using Right-Triangle Subdivision

Thomas M. Denker

Frankfurt, Germany; t-denker@t-denker.de

Abstract

An algorithm is presented that designs a glass mosaic from a photo. The image is tessellated by right triangles such that each triangle is implemented with glass of one color. The arrangement of triangles is determined by a recursive mean square error minimization technique.

Introduction

I am a maker of mosaics. Typically, I derive the design of a mosaic from a photo taken by myself or some other photographer. For the mosaic design my computer replaces the pixels of the photo by tesserae (mosaic stones) of appropriate color. Then I assemble the mosaic from Venetian smalti by hand. Figure 1 shows an example.

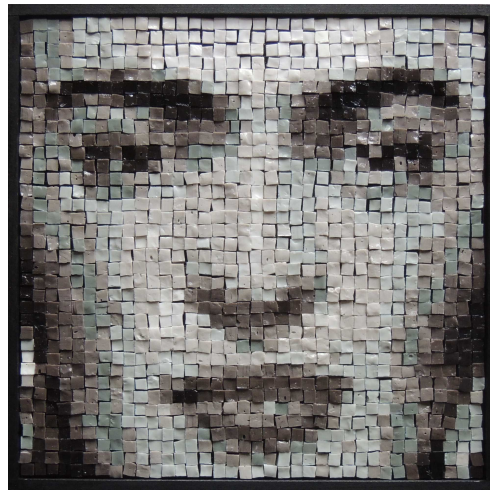


Figure 1: *Frida Kahlo* (40 × 40 cm)

Artists using this and similar techniques are presented in [2]. While [5] shows the work of a pioneer in the fields of computer arts and photomosaics, [4] presents an impressive example in my home town. More of my work can be seen in [6] and on my web site <http://www.t-denker.de>.

Objective

The approach presented in this paper tries to overcome the somewhat mechanical appearance of computer designed mosaics. For this purpose the photo is tessellated by right triangles. Each triangle is then implemented with mosaic glass of a single color. Triangles are used to keep the geometry simple. The restriction to right triangles makes the mosaic implementation with rectangular tesserae easier. The approach attempts to reproduce the photo with triangles which are not too small and whose number is not too large.

The Algorithm

The photo is cut into two or more *initial triangles*. The easiest way to do this is by splitting the image along one of its diagonals as shown in Figure 2.



Figure 2: *Initial triangles*

Each triangle or sub-triangle is split into two or four sub-triangles according to one of the six distinct schemes¹ shown in Figure 3.

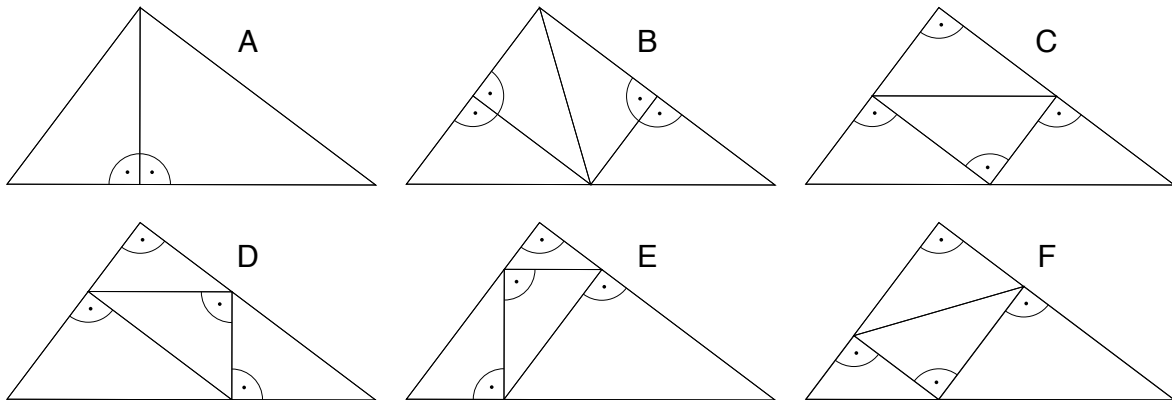


Figure 3: *Splitting schemes*

For each possible splitting scheme the algorithm recurses to the sub-triangles and then computes an error as described below. The splitting scheme, which minimizes this error, is eventually applied. The recursion ends when either of two conditions is met: the triangles become ‘too small’ or the approximation is ‘good enough’. These two expressions are clarified below. Triangles that are further split are *non-terminal*. Triangles that are not further split (the ones which actually implement the mosaic) are *terminal* triangles. Note, that the algorithm is bottom up. The error of a non-terminal triangle can only be determined after all sub-triangles have been evaluated.

Let's $s \in S = \{A, B, C, D, E, F\}$ be one the schemes of Figure 3. Then

¹That all tessellations of a right triangle into up to four similar sub-triangles can be achieved by schemes A – F (together with a repeated application of scheme A) is a proposition which I am unable to prove.

$$M_{s,T} = s(T)$$

denotes the set of either two or four similar sub-triangles in which a non-terminal triangle T is split by splitting scheme s . The error for T is then defined as the sum of the errors of the sub-triangles

$$E_T = \sum_{t \in M_{s,T}} E_t$$

and the splitting scheme s is selected where E_T is minimized.

Let's denote p_{ij} the RGB-triple presenting the color of the pixel in row i and column j of the photo. If \sum_T stands for the summation over all pixels with an upper left corner inside triangle T , then $n = \sum_T 1$ is the number of pixels inside T and

$$a_T = \frac{1}{n} \sum_T p_{ij}$$

is the average color of the pixels inside T . If all those pixels are replaced by pixels of color a_T , then a *total quadratic error*²

$$E_T = \sum_T (p_{ij} - a_T)^2$$

is introduced for T and the *per pixel quadratic error* will be

$$e_T = \frac{1}{n} E_T$$

When any of the splitting products of a triangle T has a hypotenuse length c with $c < c_{min}$ or when the per pixel quadratic error e_T becomes less than a certain threshold e_{max} , the recursion ends and T becomes a terminal triangle.

Results

Figure 4 shows two mosaic designs with different c_{min} . The one shown in Figure 4a has 209 terminal triangles, while the one in Figure 4b has 633 triangles. About $4.2 \cdot 10^6$ and $70 \cdot 10^6$ triangles had to be constructed and analyzed to generate the two designs.

The original photo is black and white. If the color version of this paper is viewed, it can be seen that the mosaic designs are a 'bit colored'. The above error definition formulas ignore a nasty detail, namely that the glass factory cannot deliver smalti in any computed average color a_T . At a certain point, a mapping $D(a_T)$ is applied which maps an arbitrary color to one of the 293 colors available from the Donà glass factory [3]. I manipulate this mapping such that some not-so-grayish colors give a bit more vibrancy to an originally black and white picture.

Alas, the software was not ready with all the necessary bells and whistles, when I had to deliver the portrait (Figure 5) of Simone Veil³ to the French Mosaic Biennale [1]. So I executed it with my standard technique. I promise, however, to present a real mosaic composed from triangles at the Bridges 2018 conference!

²I.e., that a Euclidean metric is applied in the RGB color space.

³Simone Veil, 1927 – 2017, holocaust survivor, French politician, President of the European Parliament

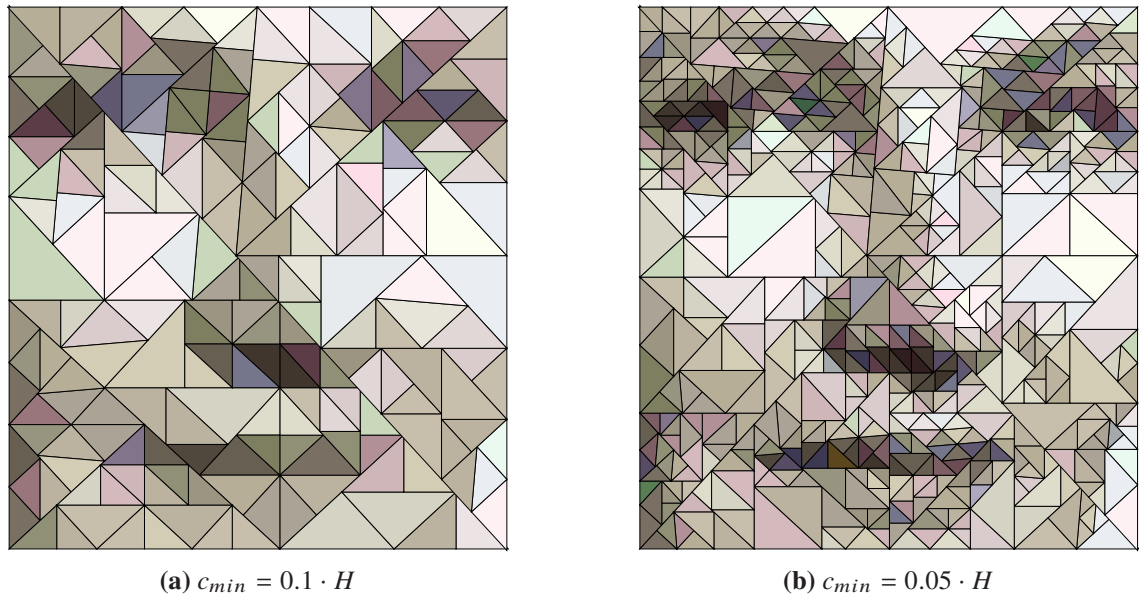


Figure 4: Mosaic designs with different c_{min} in relation to mosaic height H

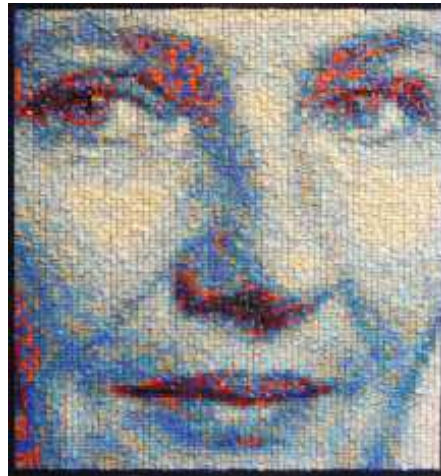


Figure 5: Simone Veil (76 × 72 cm)

References

- [1] M. Blanchard. “The Mosaic Experience.” *Mosaic exhibition*, Auray, France, 20 April – 17 May, 2018.
- [2] M. de Melo. “Pixerae: Mosaic as Research.” *Mosaïque Magazine*, MM no. 13, 2017, pp. 72–73.
- [3] S. Donà. <http://www.mosaicidonamurano.com> (last accessed 30 April 2018).
- [4] S. Huber. <http://www.stephanhuberkunst.de/fotoseite/fra-tresw.html> (last accessed 30 April 2018).
- [5] K. Knowlton. <http://www.knowltonmosaics.com> (last accessed 30 April 2018).
- [6] J. Weisbrod. “A Mosaic Passover Story II, Symbols of Judaism.” *Mosaïque Magazine*, MM no. 12, 2016, pp. 48–49.